



1"
sensor

6K
ULTRA HD

EVO II Pro ^{RTK} V3

Capture Every Detail

EVO II Pro RTK V3 has high dynamic range and powerful low light performance, enabling users to capture clear detail sets with minimal distortion and noise.

1-Inch Ultra-Sensitive Sensor

The EVO II PRO RTK V3 comes with a NEW updated 1-inch 6K CMOS image sensor with a maximum of 20 megapixels. Thanks to the ultra-sensitive algorithm, you can still shoot clean, detailed, low-noise data sets under twilight or night conditions.

F2.8~F11 Adjustable Aperture

Adapt to lighting changes by adjusting the lens aperture size, giving the pilot more shutter speed control.

Autel Explorer for Mapping



Multi-NTRIP Profile Saving

The EVO II RTK Series V3 returns to where it left off in multi-battery missions without starting from the beginning.



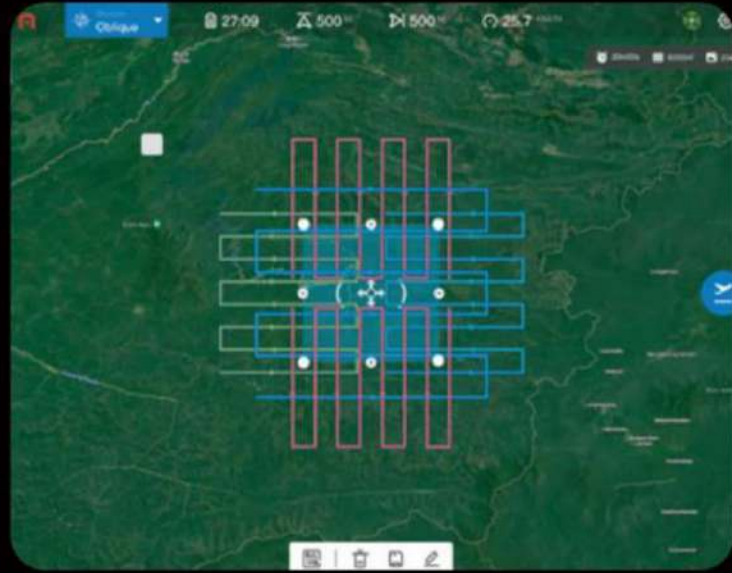
Photo Replication

For repeatable data acquisition missions, you can record the drone's previous shooting positions. All the gimbals, camera, and aircraft movements will be replicated, thus producing a full record of the entire mission.



Multi-Battery Missions

The Explorer app allows the user to create and save multiple NTRIP profiles for different locations without having to manually input account info every travel.



Advanced Feature Sets



Create Rectangular or Polygon Missions



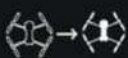
Supports Double grid mapping for additional angles



Have complete manual control over camera settings



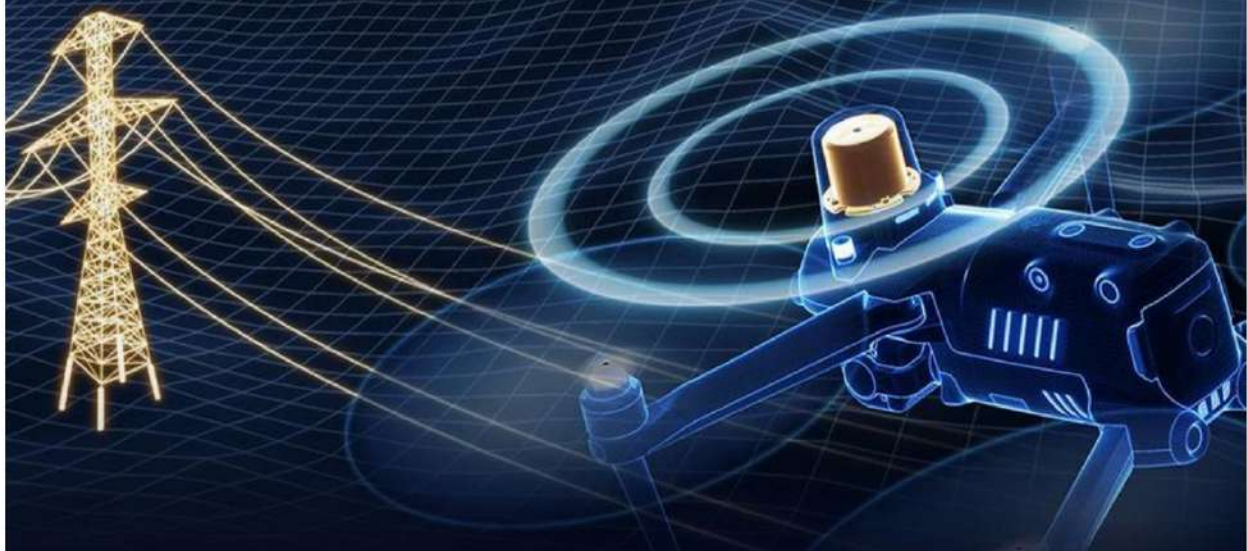
Non stop turning on corners saves time and battery life



Customizable course headings to meet orientation requirements

THE RTK MODULE ACHIEVE THE CENTIMETER-LEVEL POSITIONING

Portable, Reliable and Efficient Insight into ob Ste Details



RTK

Centimeter-level
Positioning



8 Level

Wind Resistance



20 m/s

Flight Speed



6-Direction

Omnidirectional
Avoidance

AUTEL
ROBOTICS

EVO II RTK Series V3

Unrivaled Accuracy and Control

